

eMAP.Wiz@rd A Total Charting System



eMAP.wiz@rd

ICAO Integrated Aeronautical Package

ICAO has established standards and recommended practices which require all contracting states to introduce a properly organised quality system. This ensures that the integrity classifications of all aeronautical data are achieved in order to assist the implementation of the ICAO CNS/ATM concept.

The eMAP.Wiz@rd has been developed to assist in automating the ICAO quality system and to support the user in the workflow process of receiving, approving, and publishing aeronautical data for charts and AIP. The charts can be published in any required format.

Human Machine Interface

The eMAP.Wiz@rd consists of a user friendly windows based interface for data entry. The windows menu structure ensures the proper workflow of all data through the entire charting process, from raw data reception to chart generation.

eMAP.Wiz@rd Features

The eMAP.Wiz@rd provides the user with integrated quality process management for the publishing of all ICAO Annex 4 and customer specific charts. The following are the features of the system:

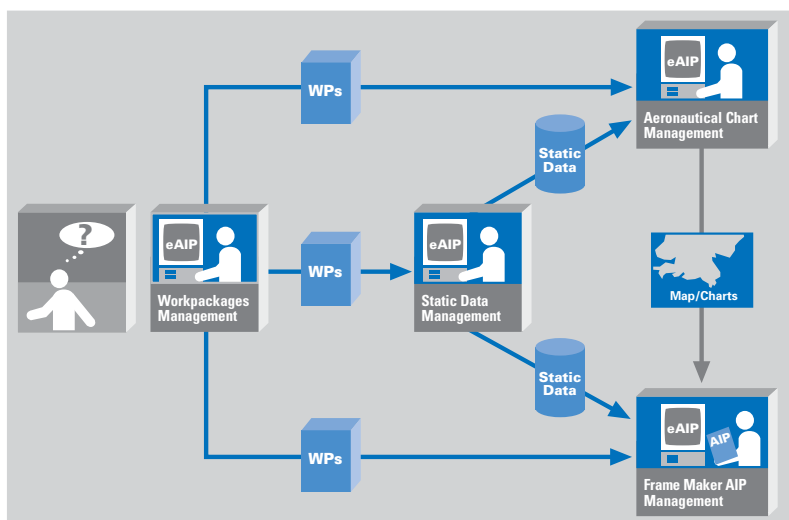
- Workflow Management
- Data Management
- Chart Feature Definition
- Chart Type Definition
- Symbolisation
- Digitising
- Change Management
- Chart Generation
- Document Management

Workflow Management

The eMAP.Wiz@rd workflow ensures that the raw data received is assessed, approved and stored in a pre-determined back traceable sequence and that all actions are legally recorded.

Data Management

The Data Management steps are derived from the workflow and consist of raw data storage, initial and specific work package



creation, static database update, distribution of relevant work packages to the AIP system, approval and finally chart and document publication.

The eMAP.Wiz@rd automates these steps and ensures the correct sequence of work is maintained.

An important part of data management is the ability to store several versions of data based upon effective dates and times. eMAP.Wiz@rd introduces this with temporal data versioning. This ensures that all chart publications are correct data at the date/time of publication and application.

Chart Feature Definition

The aeronautical chart style and label features that have to appear on a chart can be predefined using XML files and linked to the relevant objects in the AIXM database by SQL statements.

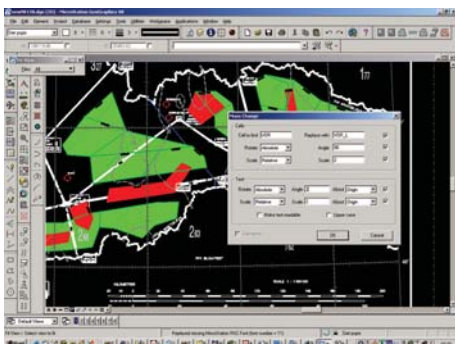


Chart Type Definition

Each chart type definition represents one particular type of ICAO Annex 4 aeronautical chart and can be defined by XML files.

Symbolisation

Symbols and colours are stored in the cell library. ICAO Annex 4, ICAO Annex 15 and ICAO Chart Manual symbols are supported. Customised symbols are also usable.

Digitising

Background chart layers can be scanned, digitised, vectorised or imported using all Bentley Microstation file formats.

Change Management

The eMAP.Wiz@rd automates the collection of updated data to existing work packages. The storage, linkage, and approval of all update data is part of this process.

Chart Generation

The final step in the process is the generation of charts. The eMAP.Wiz@rd automatically generates these charts based on the approved working packages for each publication date.

The generation of new charts uses the Chart Definition, the Chart Attributes and the AIXM database data to generate into an XML Chart. The XML Chart with the Seed File and the Cell Library will then generate a DGN Chart for an AIRAC cycle.

Document Management

The eMAP.Wiz@rd allows the user to manage:

- Charts in DGN-Format
- Chart definition files
- Output for printing
- Output for electronic publishing (PDF, XML, SVG, others)
- Print set-up files
- Topographic reference files
- Cell libraries

Multi Language Support

The eMAP.Wiz@rd supports multi language options.

Mapping & Charting Integration

The eMAP.Wiz@rd can be combined with the eAIP.Wiz@rd for integrated ICAO Annex 15 AIP publication.

System Requirements

The minimum system requirements are:

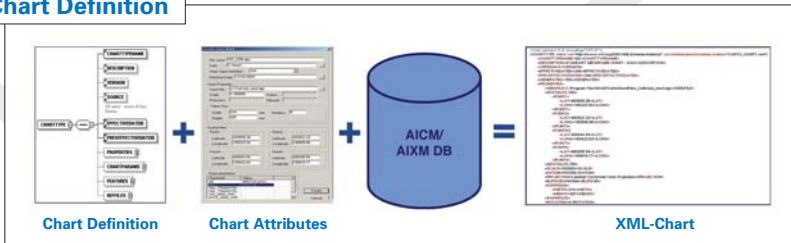
- Server
MS SQL 7.0, Oracle 9i
- Client
Bentley Microstation v8
- Operating System
Client: Windows 2000, XP
Server: all Oracle 9i supported platforms
- Hardware
Client: Pentium III, 128 MB RAM, 400 MB disc space
Server: Pentium III 880 MHz, 256 MB RAM, 20 GB disc space

Conformance Statement

The eMAP.Wiz@rd is designed to assist the implementation of an ICAO Annex 4 recommended Quality System in Aeronautical Charting Departments.

The implementation of the requirements ICAO Annex 4 and ICAO Chart Manual (Doc 8697) is ensured. Eurocontrol Static Data Procedures (SDP) are implemented. The database conforms to AIXM Edition 3.3.

Chart Definition



Avitech s.r.o.
Kukuricna 1
83103 Bratislava / Slovakia
Phone: +421 2 492 65505
Fax: +421 2 492 65599

Avitech AG
Bahnhofplatz 1
88045 Friedrichshafen / Germany
Phone: +49 (0) 75 41/ 282-0
Fax: +49 (0) 75 41/ 282-199
marketing@avitech-ag.com
www.avitech-ag.com
www.eaip.info